

HIGH QUALITY, COMMERCIAL INTERIOR DESIGN & FIT OUT,

'ON BUDGET, ON TIME, EVERY TIME'



EXPERIENCE QUALITY COMMERCIAL DESIGN AND FIT OUT.

Established in 2004, we specialise in the following sectors:

- Offices
- Cafés, restaurants and bars
- Education and learning
- Government
- Healthcare
- Retail



BELLFORT BELIEVE IN PROVIDING EACH AND EVERY CLIENT WITH:

- Personal and responsive customer service
- High quality design and workmanship on site
- Cost effective and innovative solutions
- Fast track design through to fit out
- Continued after care service

FROM INITIAL CONCEPT
DESIGN THROUGH TO
FIT OUT WE PROVIDE
A FULL RANGE OF
SERVICES INCLUDING:



IT & Infrastructure



Office Relocation



Partitions, Doors,
Flooring & Ceilings



Project Management



Mechanical & Electrical
Installations



Security Management



Property & Workspace
Evaluation



Furniture Solutions



Design Services

OUR PROCESS



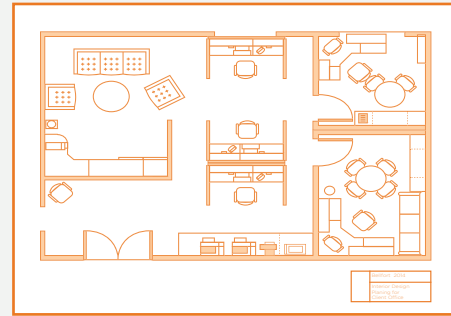
1. Discover

Let's meet. First we'll gain an understanding of your business, your requirements and the kind of space you want to create.

Considerations include:

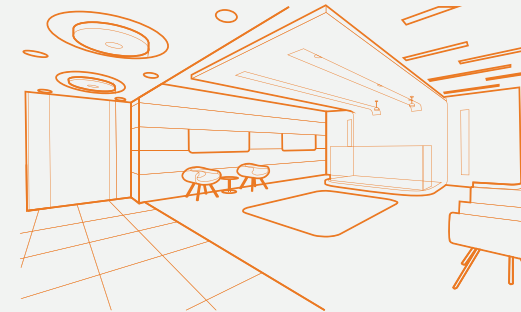
- How your business works
- Reception or entrance area - your first impression
- Meeting rooms
- Workspace design
- Storage requirements
- Relaxation/breakout areas

You can also leave it to us to assess potential sites to confirm their suitability and make recommendations. We can complete this within 1-3 days of you initially contacting us.



2. Design and cost

We'll produce a design concept and detailed cost proposal to suit your selected site. Our experienced team of interior designers and project managers will talk you through the conceptual design and make sure it's exactly what you're looking for. We'll set out the timeline with all the major milestones for completion of the project. This process will take 3 days to 2 weeks depending on the project size and complexity.

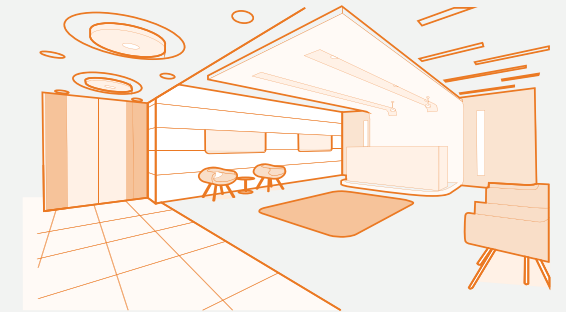


3. Define

Then we'll get down to the detail, working closely with you to deliver a detailed design within the agreed budget. We'll sort out:

- The refurbishment or fit out plans
- Construction team
- Furniture
- Fittings and finishes

Our project management includes liaison with property owners, statutory authorities and your own legal team to ensure all documentation is in place and approvals granted. This part of the process takes 1 to 4 weeks dependant on the project size, complexity and approvals required.



4. Deliver

Our experienced construction team will transform the designer's vision into reality, and our project management team will ensure that the installation is completed to the highest standards. Quality control and occupational health and safety are vital to us. You'll be involved in the process the whole way through but it doesn't end when we hand over the keys. We'll help you settle into your new space and make sure your transition is as smooth as possible. This part of the process takes 2 to 12 weeks dependant on the project size and complexity.

OUR CLIENTS



HALLIBURTON



ADG Global Supply

Walters Drive, Osborne Park

Global procurement and supply chain provider ADG required a prominent and quality new head office within a restricted time frame. Bellfort were appointed by project manager Jeffrey Morfesse under a traditional tender procurement process. Working with interior designer Rick Caldecott and consultants ATA Engineering, Bellfort carried out the complete strip out of a previous fit out, provided new electrical, data, fire and air conditioning services, and installed joinery, partitioning, doors and ceilings.

The end result is a vibrant and modern office interior using glass partitions to create a social and interactive head office. Manager areas have been semi enclosed in full height glass rather than using plasterboard and doors. This provides a feeling of transparent and equal hierarchy with the adjacent open plan areas. Meeting rooms are spread throughout the office with splashes of coloured carpet and simple AV equipment for presentations. The large, funky breakout area is perfect for informal team meetings, lunches and general social use.

PROJECT DURATION 5 weeks

PROJECT SIZE 580 m²

VALUE \$677/m²

A project of this size would normally take 8 weeks but by Bellfort implementing a strict project programme, using directly employed labour and working closely with the electrical and air conditioning contractors Bellfort completed the project in 5 weeks.



FES Superannuation

Rokeby Road, Subiaco

FES Superannuation is a well established company that provides valuable financial support to fire and emergency services professionals. While owning the building and occupying the space for over 20 years, there was a need to upgrade existing services and refresh the interior appearance.

While Bellfort were able to conceptualise and develop the changes required, a lot of base building works were required to be carried out.

Major works included re-cabling the site, a complete new mechanical system and ceiling plus demolition of existing masonry walls. This extensive work was carried out alongside partitioning, flooring, joinery and loose furniture installations.

Ultimately, the interior created is now current and able to move forward with FES for years to come.

PROJECT DURATION 6 weeks
FLOOR AREA 250 m²
VALUE \$1,500/m²



Repeat Offender Café & Gallery

Hay Street, Subiaco

PROJECT DURATION 3 weeks
FLOOR AREA 150 m²
VALUE \$1,333/m²

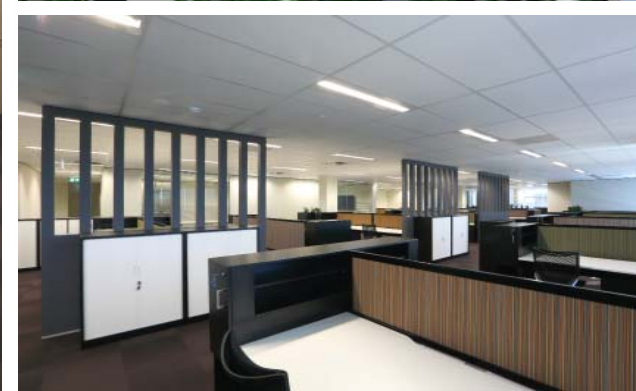


A new start up business the Repeat Offender Café were looking for a bright, inviting and quality fit out to reflect the superior brand of beverages and snacks they wished to provide.

Bellfort designed and built the distinctive café suitable for dine-in and take away services. The peaceful gallery is a world away from the hustle and bustle of Subiaco.

The works involved the complete strip out of an existing counter facility, new plumbing and electrical services, stainless steel counter and cabinet works, flooring and painting.

The end result is a unique, warm and sumptuous café with an urban edge. A stylish kitchen area with sleek lines, quality fixtures and fittings. A relaxing indoor gallery and outdoor seating area with substantial room for waiting and take out customers.



CGG

1 Ord Street, West Perth

This global and forward thinking corporation saw the value in consolidating multiple accommodation sites into one building with the aim of providing better workflow, communication and collaboration.

Bellfort designed and constructed two floors for CGG which included signage, partitioning, electrical, data, AV, fire, mechanical and hydraulic services. A major relocation of the CGG data centre involved a lot of concise planning and scheduling to ensure downtime did not impact on the business.

The interior space is bright and functional. The reception area and client rooms are technologically impressive and welcoming. The working environment provides a combination of work spaces and work rooms which accommodate staff interaction and privacy as required.

Superior attention to detail has allowed CGG to move into their new premises and continue their business without any issues.

PROJECT DURATION 12 weeks

FLOOR AREA 1,831 m²

VALUE \$1,240/m²





Bento Mee Asian Cuisine

Wyatt Grove Shopping Centre, Hocking

A new start up dine-in and take-away restaurant with a view to future outlets, Bento Mee has a strong focus on providing superior Asian cuisine in a fast and efficient manner.

The blend between a compact yet functional kitchen area with the vibrant front of house facilities was an important goal. Efficiency is achieved through a streamlined servery and cooking area.

A high level of finish throughout is evident with partitioning, ceilings, flooring, electrical, data, fire and mechanical services working together effortlessly. Joinery and loose furniture create character and allow the proprietor to showcase the Asian influenced culture and style of Bento Mee.

PROJECT DURATION 4 weeks
FLOOR AREA 85 m²
VALUE \$1,623/m²

School of Early Learning

Stirling Highway, Fremantle

This third fitout for SOEL provided an interesting challenge, being based in a heritage building and coming with a series of restrictions and requirements which had to be met.

The overall achievement of this interior space is exhilarating and evidence that attention to detail and high quality craftsmanship skills are not forgotten.

Restoration works throughout the building allowed long forgotten floors to be brought back to life and historic details to once again shine.

Works were not only restricted to the interior and this building is once again able to be brought back to life.

PROJECT DURATION 10 weeks
FLOOR AREA 772 m²
VALUE \$1,000/m²

Unir Management

Murray Street, Perth

As an international property investment company, Unir required a high level of finishes and furniture to reflect company corporate values.

Bellfort designed and installed an exceptionally high standard of new loose and bespoke furniture, artwork and an auto frameless sliding glass door.

The result is a stylish, inviting and secure reception. The boardroom glazing film, artwork and custom built furniture with veneer finishes, compliment each other and reflect the company values of quality and attention to detail.

PROJECT DURATION 4 weeks
FLOOR AREA 131 m²
VALUE \$1,296/m²

Posco Engineering & Construction

St Georges Terrace, Perth

A global engineering and construction company that required a corporate identity for their Perth office reception.

Bellfort designed and built the reception to provide a positive and professional first impression.

Construction works also included provision of meeting room and breakout area. The works were completed while Posco continued to operate from the office. Painting and noisy works were completed outside normal working hours. The project was completed under budget.

Posco have been overwhelmed with the positive feedback received from visitors to the office. The new reception emphasises their commitment to quality and corporate identity.

PROJECT DURATION 2 weeks
FLOOR AREA 70 m²
VALUE \$1,014/m²





AGC (An Ausgroup company)

Parliament Place, West Perth

As a leading fabrication & manufacturing company, AGC required a fast track fit out to accommodate an expanding workforce for their new corporate headquarters.

Bellfort designed and furnished the new office to accommodate over 70 new open plan workstations. The remaining areas underwent a sympathetic refurbishment including new carpets, painting and corporate branding. The breakout space was enclosed for privacy and noise with new vinyl flooring and canteen furniture. The air conditioning and lighting was modified to suit the new layout and Cat 6 data cabling installed to all new workstations.

From initial instruction and sign off of the outline floor plan Bellfort obtained all statutory approvals for the work in under 3 weeks. The project was delivered on budget, in just 12 working days. On day 13 the staff were overwhelmed to be moving into their new office.

PROJECT DURATION 3 weeks
FLOOR AREA 1890 m²
VALUE \$356/m²



Accenture

Dufours Place, Soho, London

This global management consulting practice occupied 4 floors of a building in London's Soho. The brief was to design a funky client facing reception area and to carry out a rolling programme of fit out and refurbishment throughout all floors whilst the client remained in occupation.

Bellfort closely managed the process assisting with internal relocations and carrying out major works outside of working hours to ensure minimum disruption to the client.

PROJECT DURATION 12 weeks
FLOOR AREA 600 m²
VALUE \$1,110/m²



Partygaming

King William Street, London

Beating off stiff competition from a large market leading competitor, Bellfort secured this full design and build fit out for a rapidly expanding on-line gaming company who were on the verge of being floated on the stock exchange.

The project involved a full design package, partitioning, decoration, flooring, breakout areas, data cabling, modular power, and lighting.

The driving factor for the client was the need for a very rapid turnaround without compromising on quality or look and feel. In the opening weeks of this 6 week project it became apparent that the client was unable to wait until the proposed completion date and needed to move earlier. An around the clock programme of works was instigated and the team delivered this six week project a week and a half early without compromising quality.

PROJECT DURATION 4½ weeks

FLOOR AREA 1,500 m²

VALUE \$810/m²



TESTIMONIALS

"ADG Global Supply nominated Bellfort to fit out our new office premises in Osborne Park and we honestly could not be happier with the result. Bellfort met all of our deadlines, completed the job exactly as we wanted it and provided fantastic after-care service. We love our new office and would be happy to recommend Richard and his team!"



Yvette Kennedy
ADG Global Supply

"We would like to take this opportunity to express our heartfelt thanks to you and your team for the recently completed fit out at our office. The designs provided by Jenny were accurate, creative, clear and concise. The installation team completed the work on time and to a high standard of workmanship. We note the provisional sums provided in the original budget were completed below cost and we were most pleased to receive a credit and subsequent final account under the original budget. Once again, thank you for all your teams effort."



Young-Pil Kong
Posco Engineering & Construction

"Bellfort has just completed the design and fit out of our new head office in West Perth. We had a very tight period between leaving our previous premises and moving into our new office. Bellfort reacted quickly to providing a detailed specification and budget costs from only a brief initial site inspection. They fully designed and obtained all statutory approvals in under 3 weeks. 1 week prior to starting we confirmed a requirement for 33 extra workstations. Bellfort completed the strip out, new furniture, partitioning, flooring, painting, power, data and AC alterations in just over 2 weeks onsite. Both the design and installation was outstanding. The Bellfort site team are professional and a pleasure to deal with. We would not hesitate to recommend Bellfort to others."



Tony Tomich
AGC

"During Mar and Apr 2013, Richard and his team of designers and subcontractors conducted the design and fitout for my café (Repeat Offender) in Subiaco. The conduct of the design phase and the professionalism of the designer was second to none. They were able to take a very basic outline from my thought bubble and create the space I needed along with a few innovative ideas that gave the café a unique identity. The conduct of the build was excellent with the subcontractors being very professional and displaying a high level of attention to detail. After four months of operation the build and fit out still look great and I have not experienced one issue or fault with the build. I would have no hesitation in recommending Bellfort Interiors to anyone seeking a reliable builder."



Andy Males
Repeat Offender Café and Gallery

"Bellfort have done the office refurbishment for our Perth office. All our requirements have been professionally addressed and delivered. Would highly recommend Bellfort to any company. And look forward working along with Richard and his team again in the future."



Winly Chan
Unir Management

"We recently had our office refurbished by Bellfort. Richard and I had dealings for quite some time and each time the goal posts changed Richard was always very professional and very understanding. The Bellfort team were a pleasure to work with; the designer's work was creative as well as practical and the construction team worked to a high standard, making a conscious effort to minimise disturbances to our staff and other people using the building. Everything was delivered on time and on budget. We would happily recommend Bellfort to anyone with a design and fit out requirement."



Linda Onton
Goldfields Australia

"Bellfort have just completed a small renovation job for us. I was extremely impressed by their professionalism and attention to detail which was demonstrated not only by the project manager but also carried through to the various contractors. I would definitely use Bellfort again and feel confident recommending them to others."



Karen Wright
Paladin

CONTACT US

PERTH, AUSTRALIA OFFICE

t. +61 8 6141 1030
e. info@bellfort.com.au

Bellfort Services Pty Ltd
Unit 6, 513 Hay Street,
Subiaco,
WA, 6008
Australia

bellfort.com.au



LONDON, UK OFFICE

t. +44 (0)203 697 4550
e. info@bellfortuk.com

Bellfort Services Ltd
Unit 22, Greenwich Centre Business Park,
53 Norman Road,
London SE10 9QF
United Kingdom

bellfortuk.com





BELLFORT SERVICES PTY LTD
Perth, Australia Office

t. +61 8 6141 1030
e. info@bellfort.com.au

Unit 6, 513 Hay Street, Subiaco,
WA, 6008 Australia

bellfort.com.au

